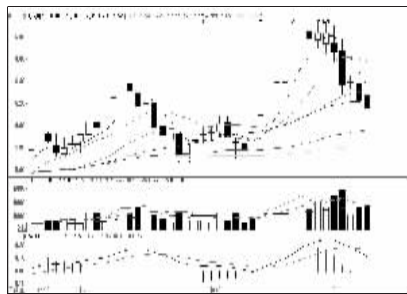


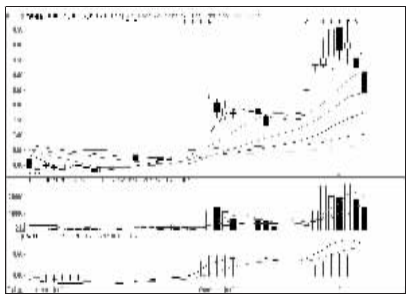
股东人数增减前10

股东人数减少前10



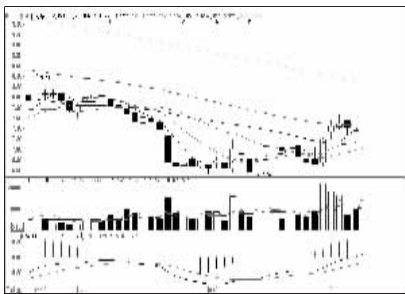
方大集团 (000055):短线仍将回调

股东人数增加前10



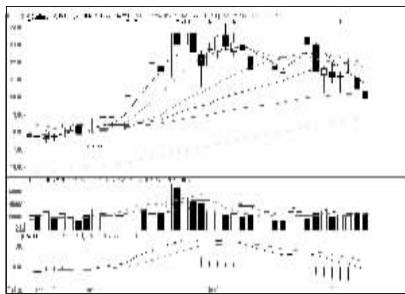
拓中建设 (002346):大概率继续走弱

资金流入金额前10



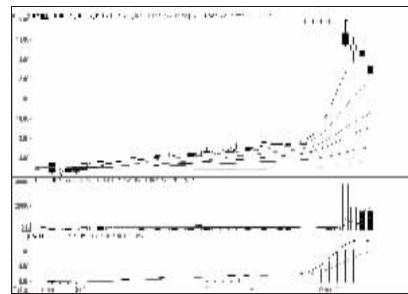
保利地产 (600048):有望继续上行

资金流出金额前10



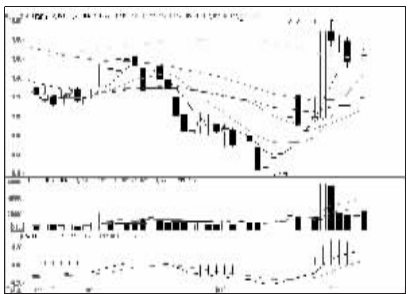
复星医药 (600196):下行可能性增大

成交突增前10

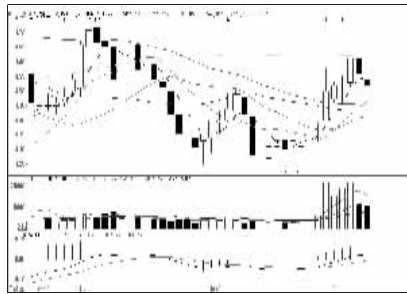


中南重工 (002445):高位回调,落袋为安

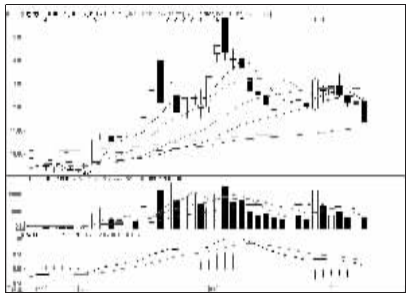
成交金额前8



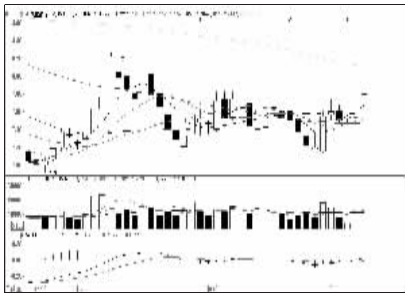
浦发银行 (600000):短线回调,反弹可期



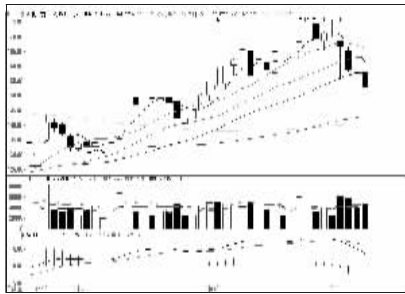
晨鸣纸业 (000488):箱体震荡概率大



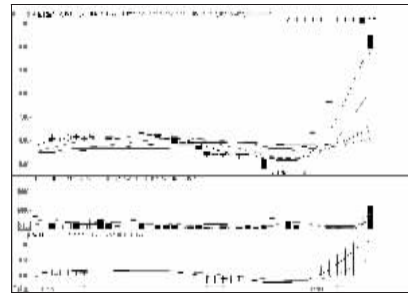
龙宇燃油 (603003):继续下行概率大



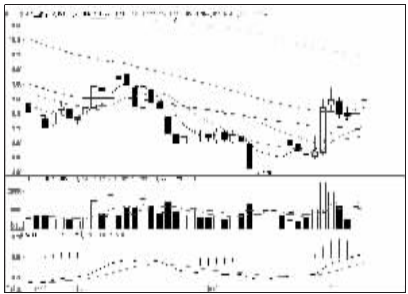
民生银行 (600016):有望继续上行



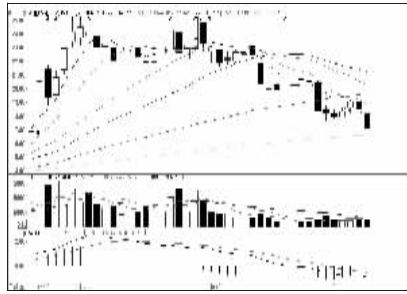
贵州茅台 (600519):冲高回落,逢高减仓



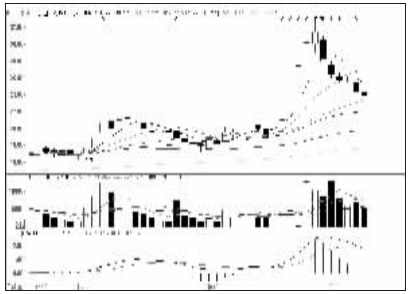
金丰投资 (600606):技术性回调压力大



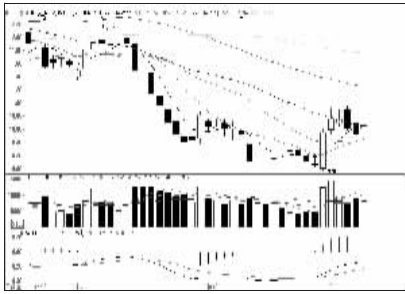
兴业银行 (601166):短线或将反弹



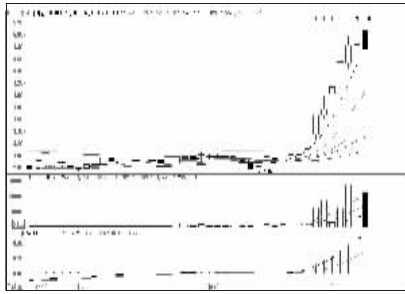
捷顺科技 (002609):大概率延续跌势



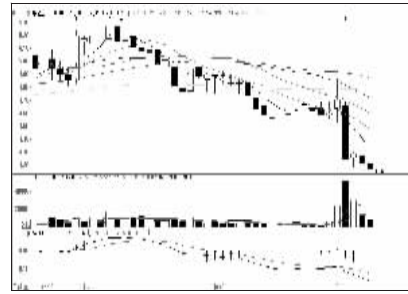
开元仪器 (800338):高位回落,落袋为安



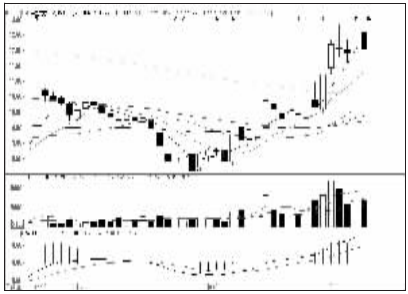
中信证券 (600030):横盘整理,观望为宜



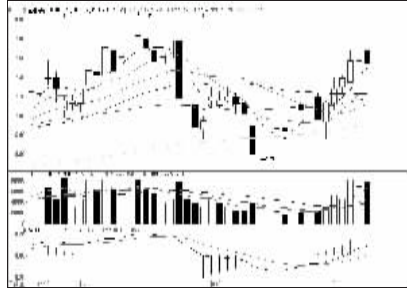
唐山港 (601000):强势格局,持股观望



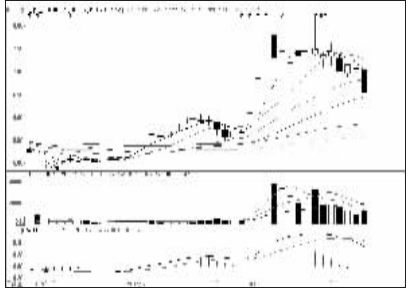
粤宏远A (000573):破位下行,暂宜回避



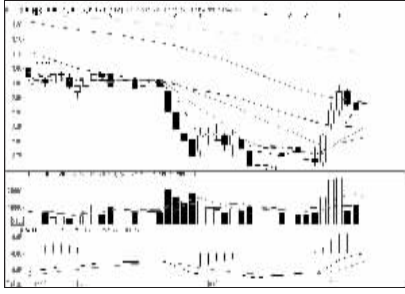
荣盛发展 (002146):上方仍有空间



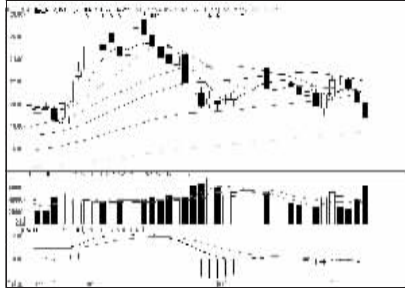
金刚玻璃 (800093):箱体震荡概率大



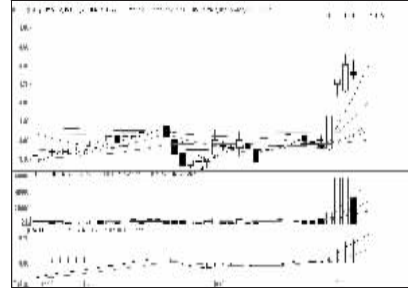
大洲兴业 (600603):震荡整理概率大



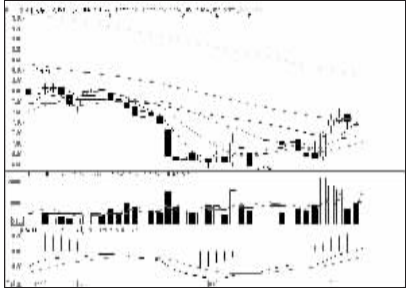
中国建筑 (601668):仍有震荡上涨可能



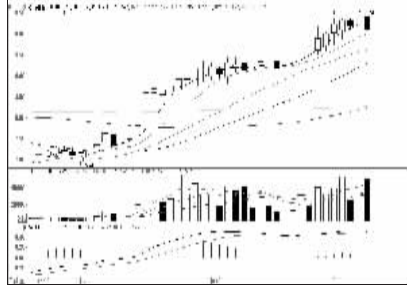
国金证券 (600109):静待企稳,或有上攻



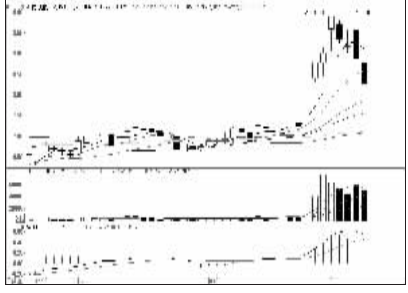
深深房A (000029):上行通道,继续持有



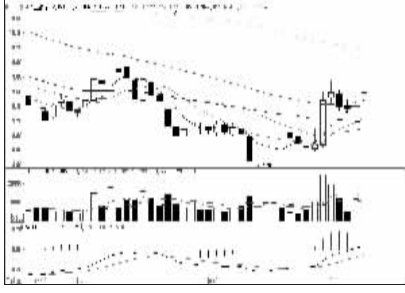
保利地产 (600048):有望继续上行



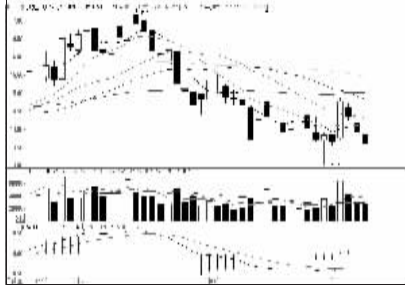
海鸟建设 (600515):强势格局,持股观望



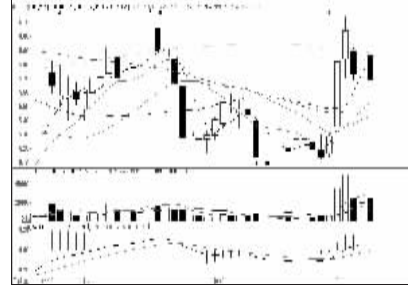
凌云股份 (600480):或有超跌修复行情



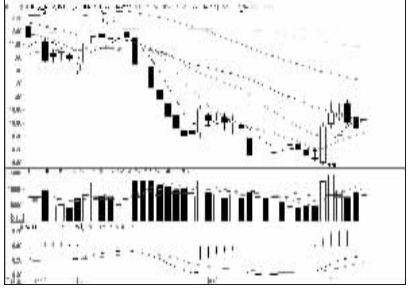
兴业银行 (601166):短线或将反弹



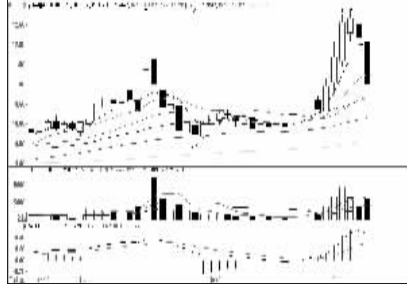
鹏博士 (600804):弱势格局,暂宜回避



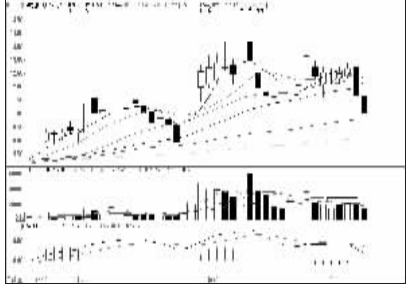
中关村 (000931):成交量萎缩,短期维持震荡



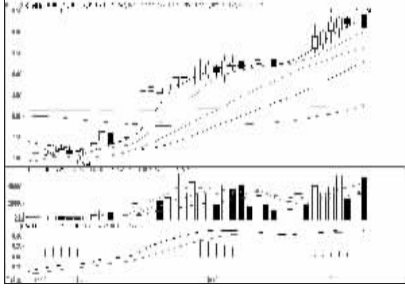
中信证券 (600030):横盘震荡,观望为宜



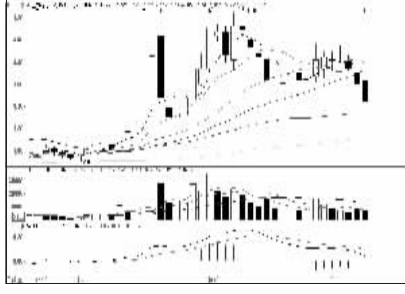
步森股份 (002569):短线或有超跌修复



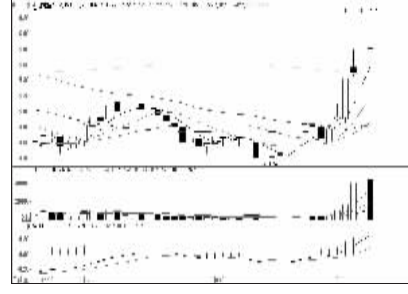
动力源 (600405):箱体震荡概率大



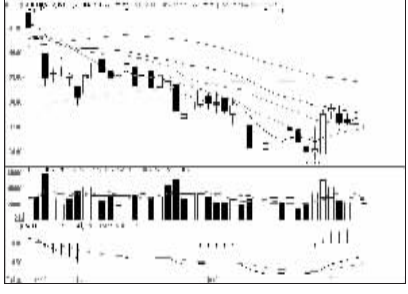
海鸟建设 (600515):强势格局,持股观望



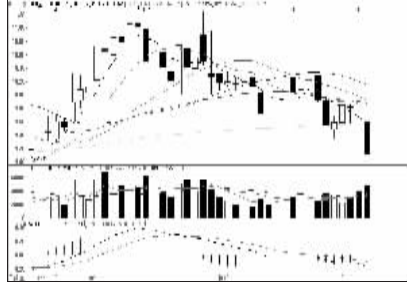
上海石化 (600688):跌势加速,回避



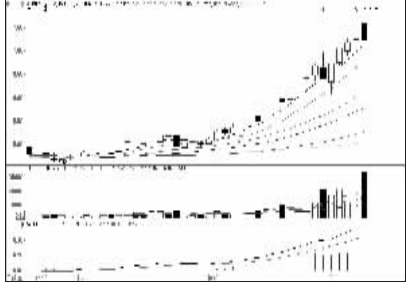
湖南投资 (000548):放量冲高,或有反复



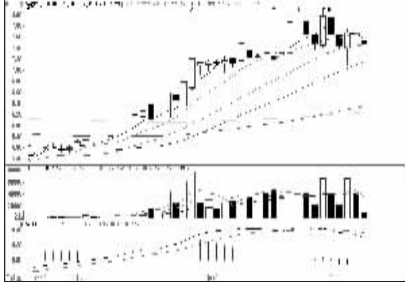
中国平安 (601318):弱势格局,观望



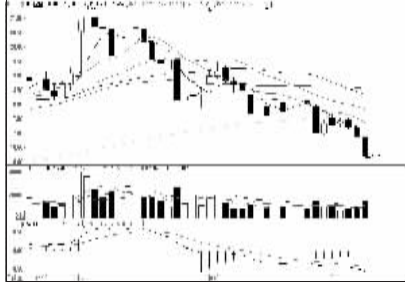
*ST中服 (000902):空头占优,暂宜回避



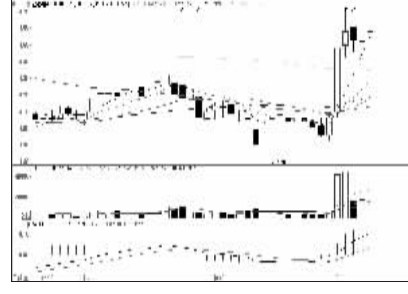
*ST东热 (000958):高位回调,暂宜观望



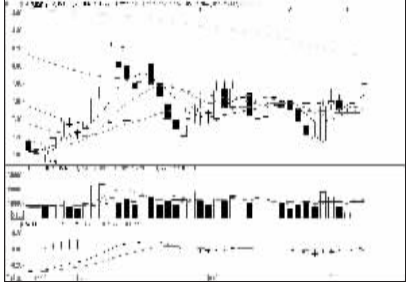
福建水泥 (600802):上涨空间收窄



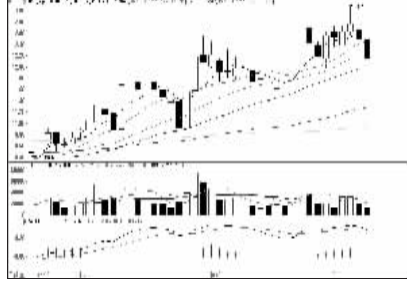
中国卫星 (600118):下行通道,涨宜回避



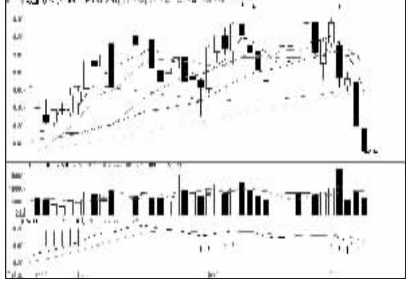
宏达股份 (600331):短线或横盘整理



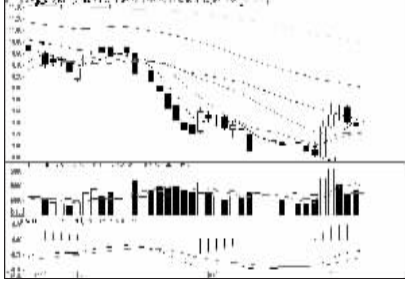
民生银行 (600016):有望继续上行



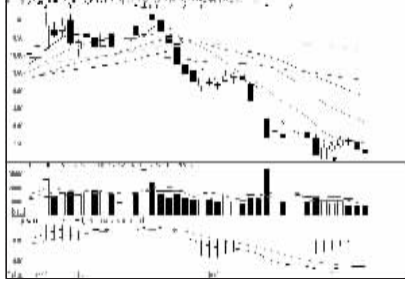
黄山旅游 (600054):下行可能性增大



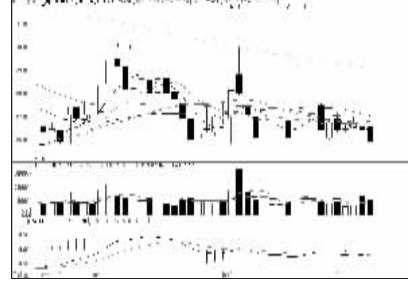
京运通 (601908):下行通道中,暂宜回避



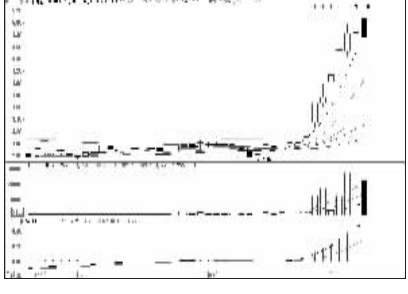
海通证券 (600837):低位整理格局延续



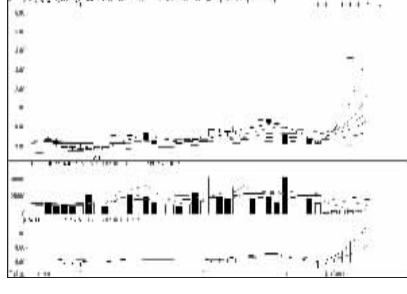
苏宁云商 (002024):仍有下行压力



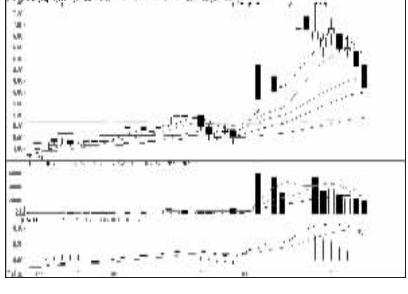
天房发展 (600322):冲高回落,暂宜观望



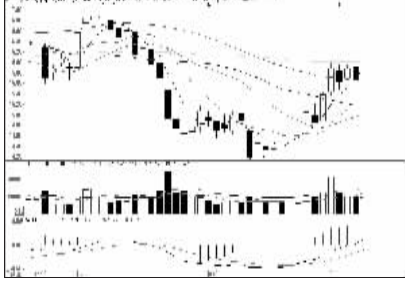
唐山港 (601000):强势格局,持股观望



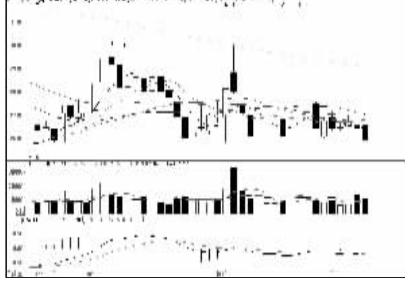
万力达 (002180):涨幅已大,不宜追高



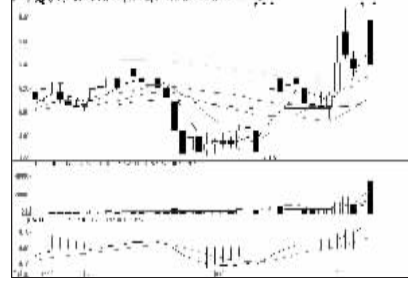
中航黑豹 (600760):静待企稳,或有反弹



海螺水泥 (600585):放量冲高,或有反复



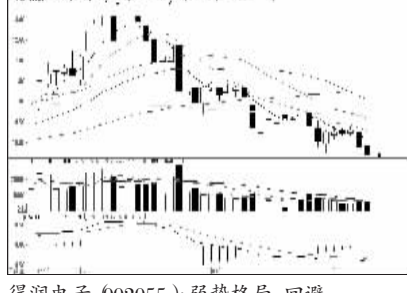
白云山 (600332):低位整理概率大



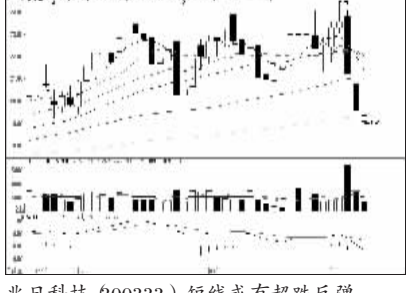
大名城 (600094):箱体震荡概率大



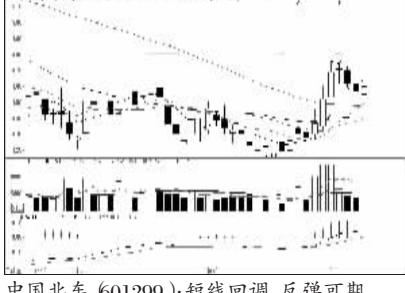
同德化工 (002360):上涨空间收窄



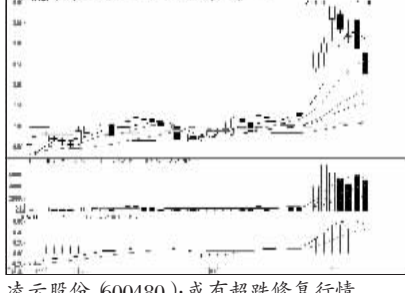
得润电子 (002055):弱势格局,回避



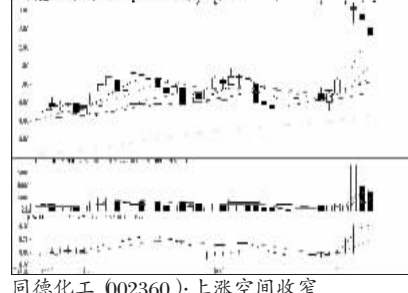
兆日科技 (800333):短线或有超跌反弹



中国北车 (601299):短线回调,反弹可期



凌云股份 (600480):或有超跌修复行情



同德化工 (002360):上涨空间收窄



看股票 买彩票
全搞定
大智慧手机版
d.wapgw.cn