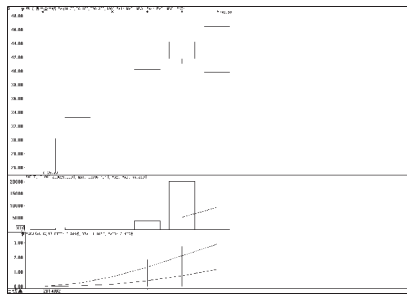
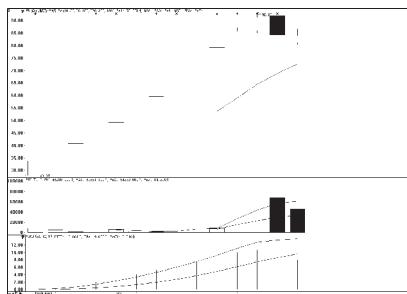


股东人数增减前10

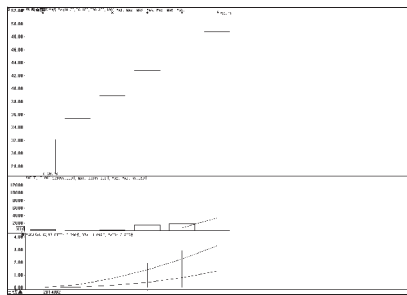
股东人数减少前10



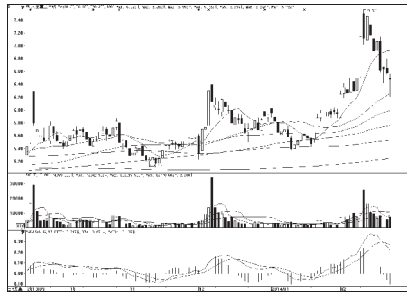
东易日盛 (002713):冲高回落,谨防回调



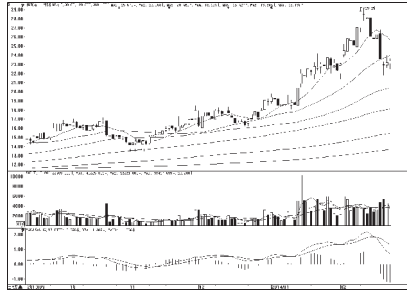
众信旅游 (002707):冲高回落,观望



岭南园林 (002717):冲高回落概率大



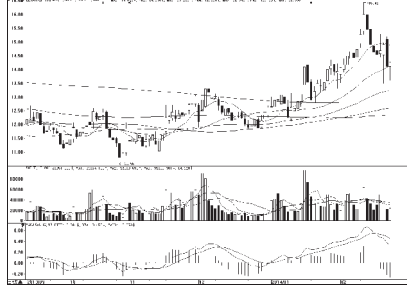
大金重工 (002487):短线或横盘整理



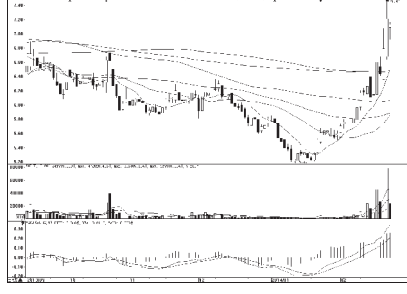
和而泰 (002402):仍有上涨空间



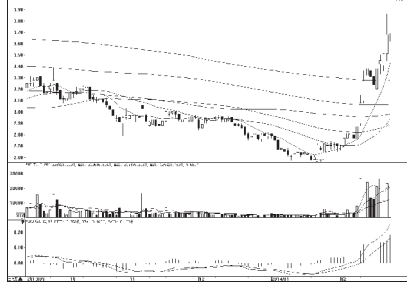
海岛建设 (600515):有望突破前高



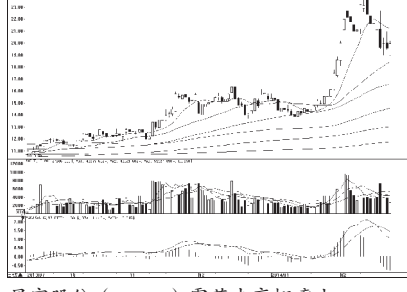
江苏神通 (002438):缩量企稳,反弹可期



福建水泥 (600802):短线震荡整理概率大

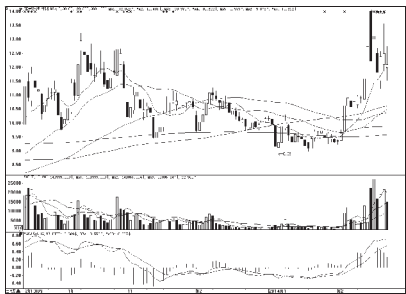


卧龙地产 (600173):逆市上涨,仍有空间

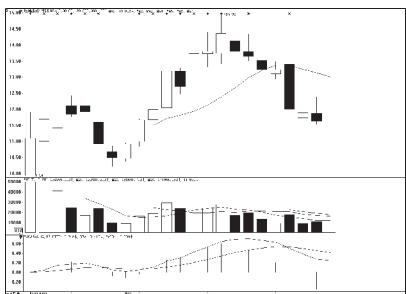


星宇股份 (601799):震荡走高概率大

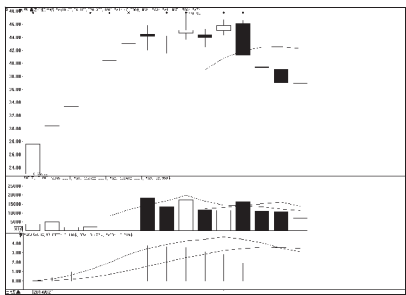
股东人数增加前10



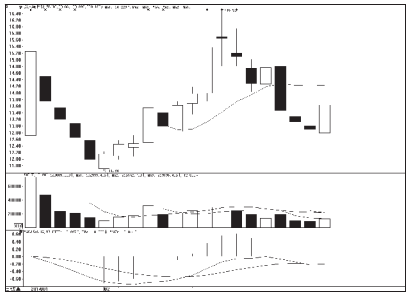
龙宇燃油 (603003):高位整理概率大



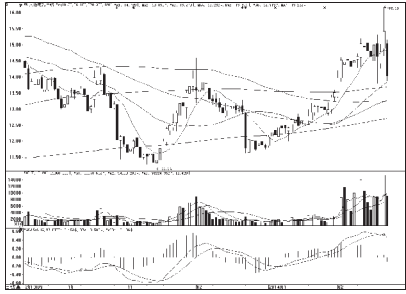
应流股份 (603308):仍有反弹空间



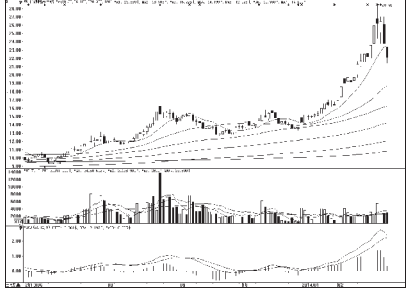
晶方科技 (603005):高位调整,暂宜回避



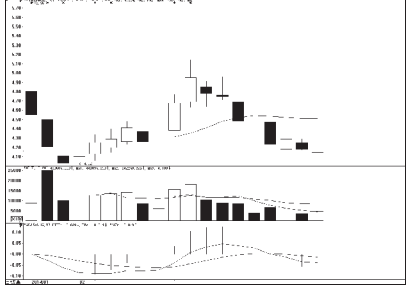
贵人鸟 (603555):区间震荡格局延续



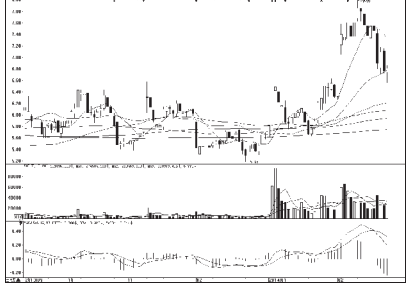
大连电瓷 (002606):区间震荡概率大



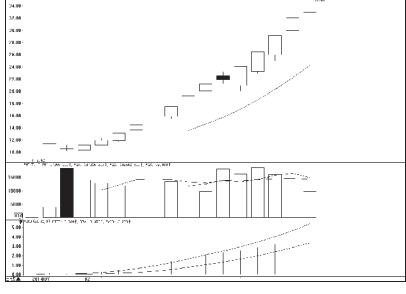
什源制药 (600254):深幅调整,反弹可期



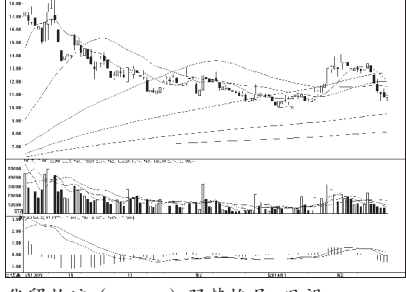
陕西煤业 (601225):弱势格局难改



鲁丰环保 (002379):深幅调整,暂宜观望



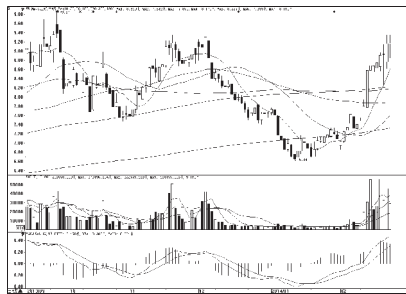
金轮股份 (002722):涨幅已大,不宜追高



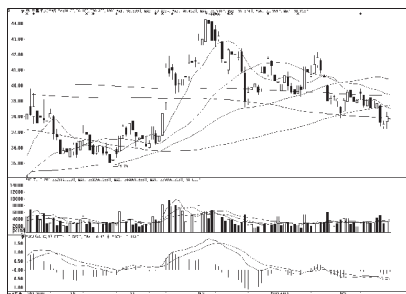
华贸物流 (603128):弱势格局,观望

一周资金流入流出金额前10

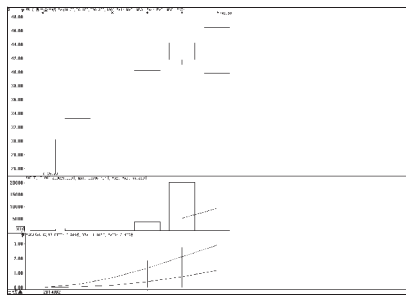
资金流入金额前10



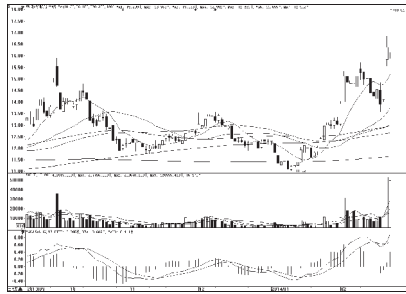
海岛建设 (600515):有望突破前高



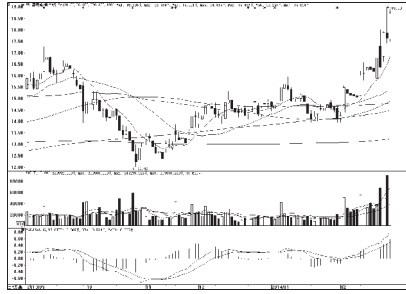
中国平安 (601318):弱势格局难改



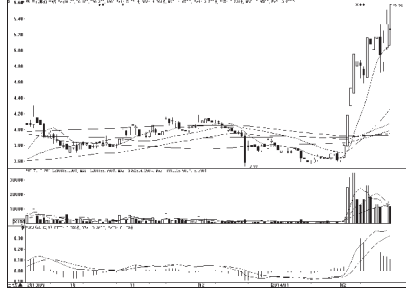
东易日盛 (002713):冲高回落,谨防回调



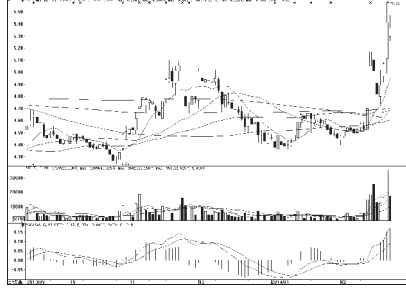
杉杉股份 (600884):短线或有反复



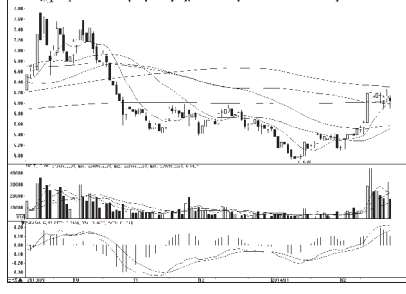
国电南瑞 (600406):仍有震荡上涨空间



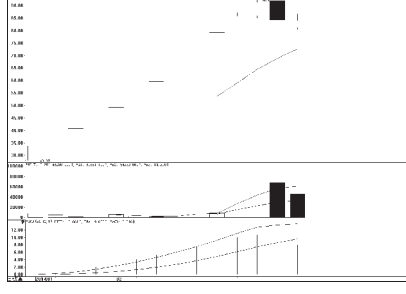
中信银行 (601998):横盘整理概率大



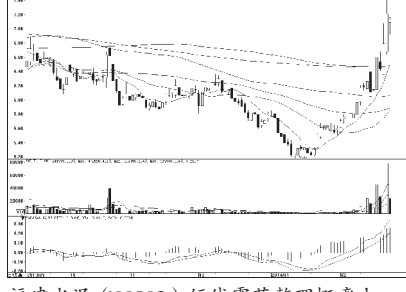
中国石化 (600028):短线或震荡整理



香江控股 (600162):横盘整理概率大

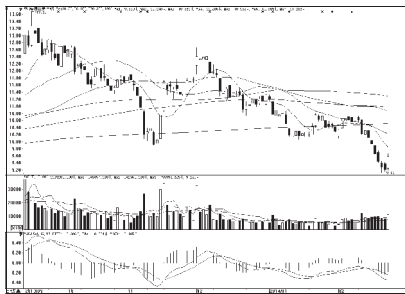


众信旅游 (002707):冲高回落,观望

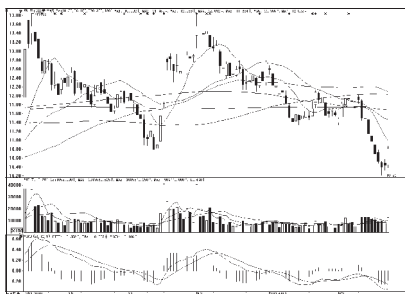


福建水泥 (600802):短线震荡整理概率大

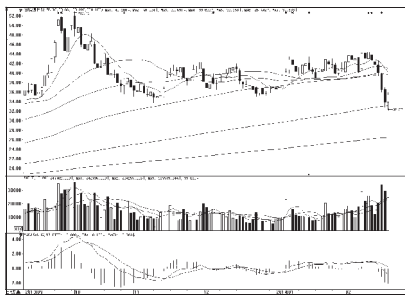
资金流出金额前10



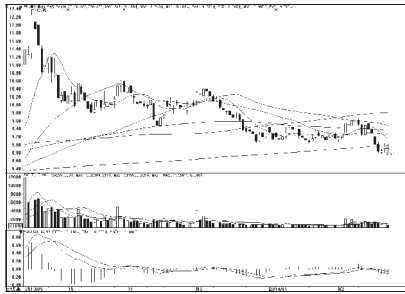
海通证券 (600837):底部企稳,适当关注



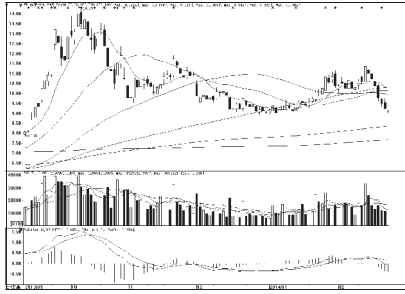
中信证券 (600030):碎步上涨概率



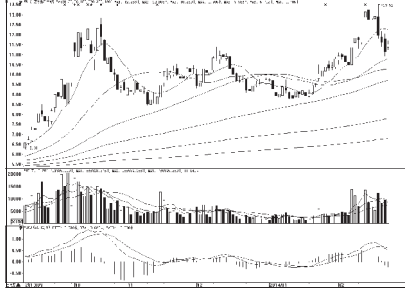
百视通 (600637):破位下行,观望



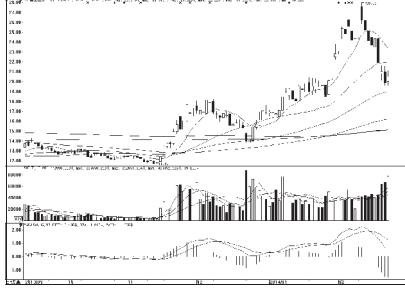
浦发银行 (600000):弱势格局,观望



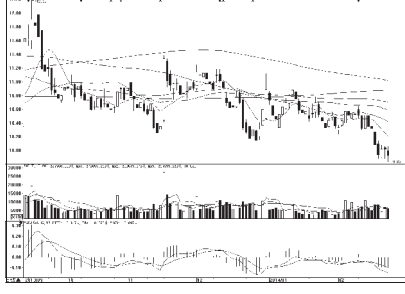
苏宁云商 (002024):短线弱势格局难改



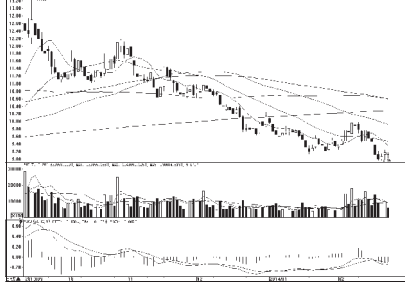
东方明珠 (600832):短线或区间震荡



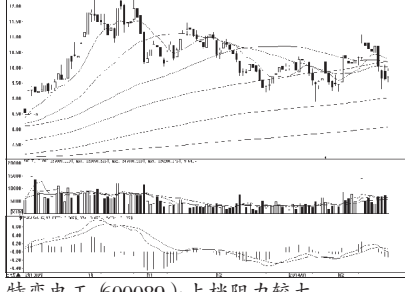
国金证券 (600109):横盘整理概率大



招商银行 (600036):弱势格局难改



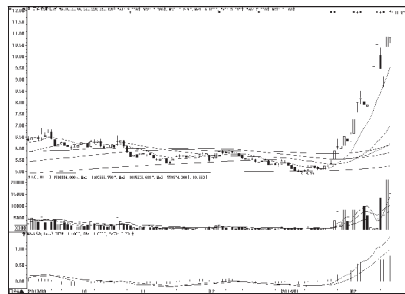
兴业银行 (601166):弱势格局,观望



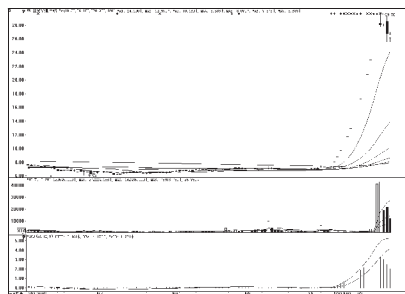
特变电工 (600089):上档阻力较大

周成交金额

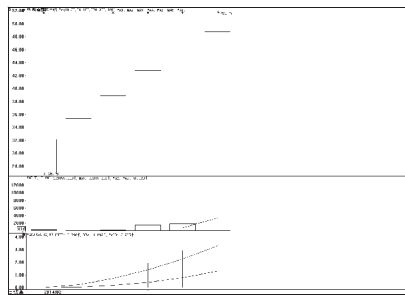
成交突增前10



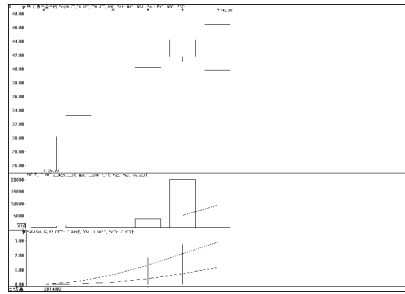
万向钱潮 (000559):逆市冲高,或有反复



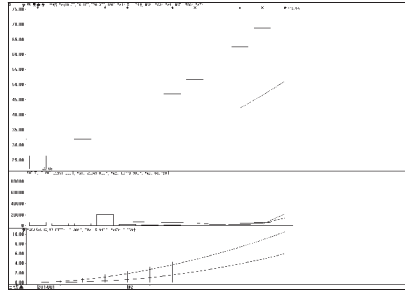
世纪华通 (002602):风险释放,暂宜观望



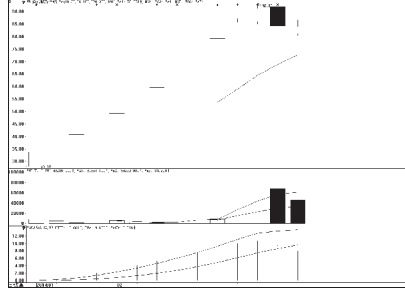
岭南园林 (002717):短线或有震荡,观望



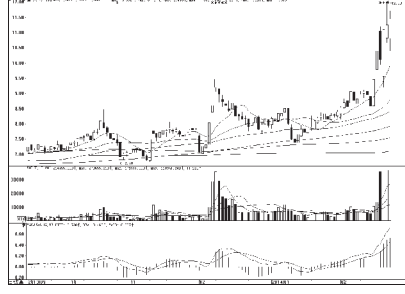
东易日盛 (002713):冲高回落,暂宜观望



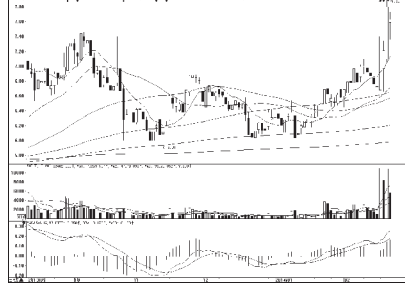
易事特 (600376):涨幅已达,不宜追高



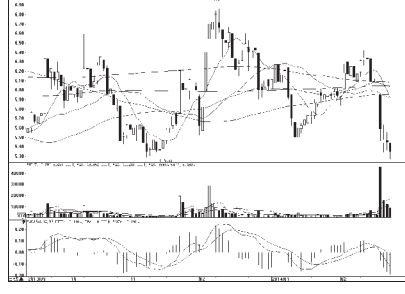
众信旅游 (002707):冲高回落,观望



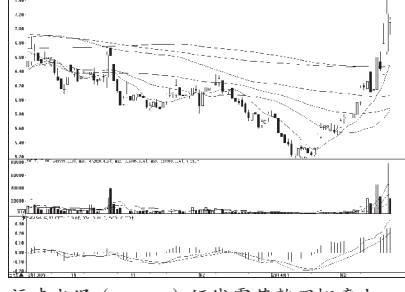
雪莱特 (002076):震荡上涨概率大



广博股份 (002103):短线或有震荡

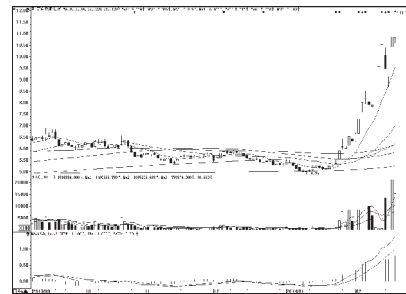


江山化工 (002061):弱势格局,观望

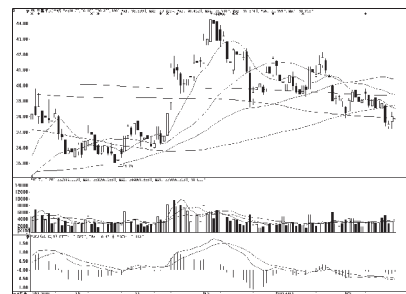


福建水泥 (600802):短线震荡整理概率大

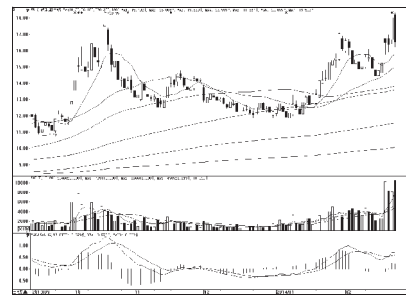
成交金额前10



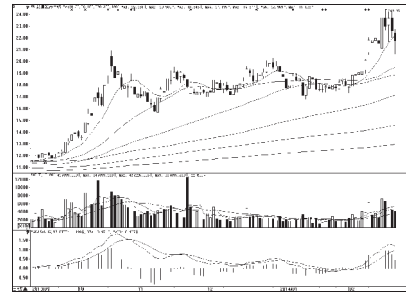
万向钱潮 (000559):逆市冲高,或有反复



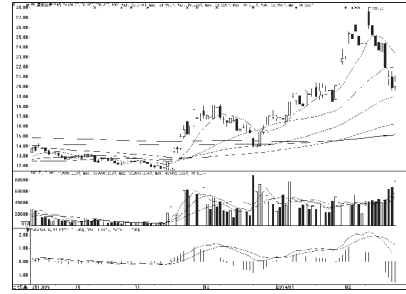
中国平安 (601318):弱势格局难改



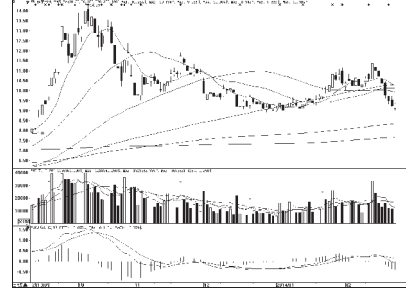
东软集团 (600718):高位震荡概率大



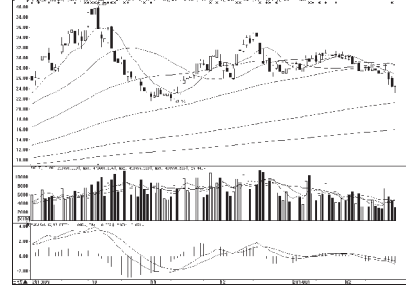
复星医药 (600196):均线支撑较强,关注



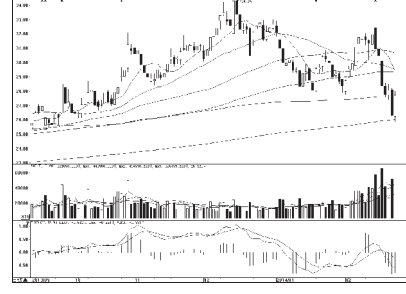
国金证券 (600109):横盘整理概率大



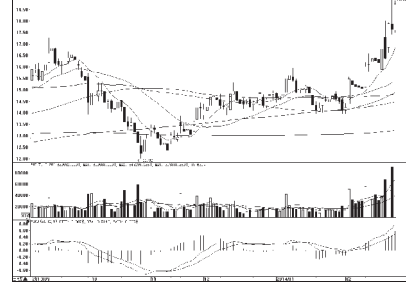
苏宁云商 (002024):短线弱势格局难改



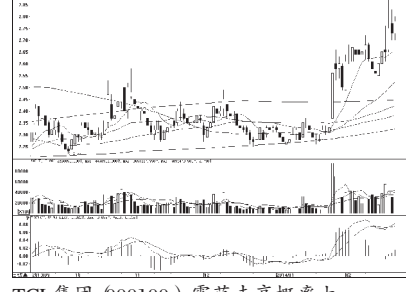
华谊兄弟 (600027):破位下行,观望



格力电器 (000651):弱势格局,观望



国电南瑞 (600406):仍有震荡上涨空间



TCL集团 (000100):震荡走高概率大