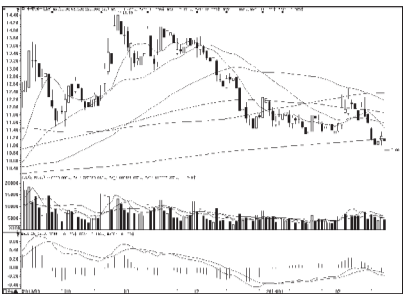


## 沪深10大权重股



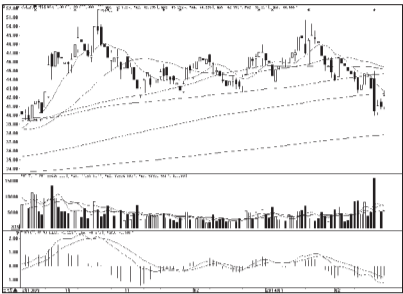
中国石油 (601857):箱体震荡概率大



平安银行 (000001):弱势格局暂难改变



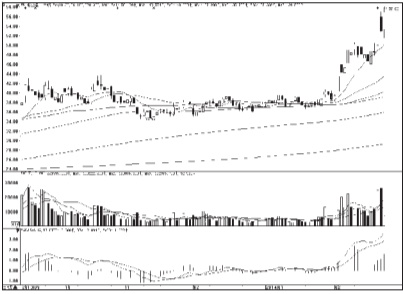
工商银行 (601398):破位下行,回避



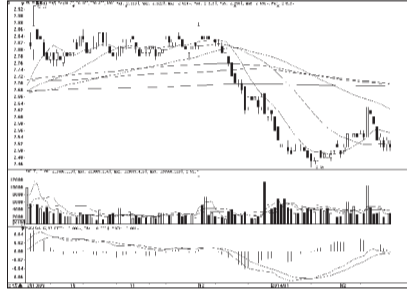
双汇发展 (000895):短线反弹或持续



农业银行 (601288):弱势格局,观望



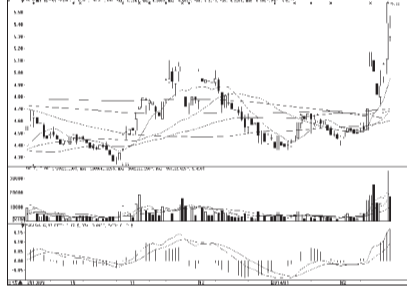
比亚迪 (002594):技术回调压力大



中国银行 (601988):低位整理格局延续



海康威视 (002415):箱体震荡概率大



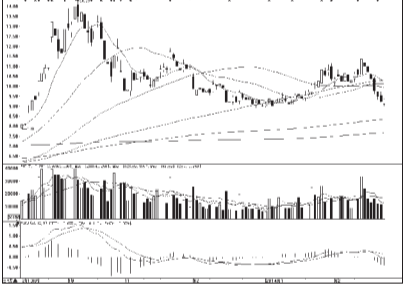
中国石化 (600028):横盘整理概率大



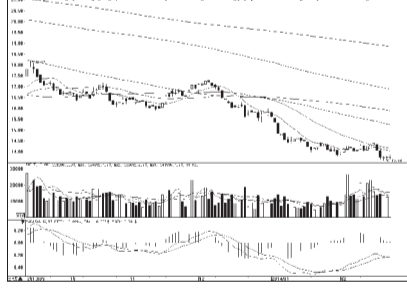
格力电器 (000651):短期反弹或可持续



中国人寿 (601628):横盘震荡,暂宜回避



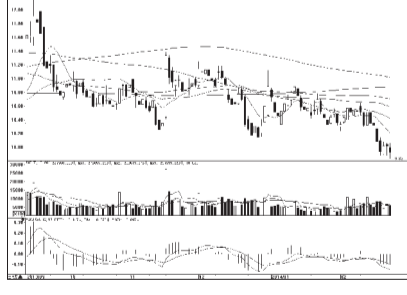
苏宁云商 (002024):仍有震荡上涨可能



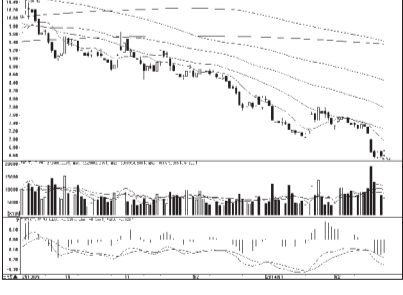
中国神华 (601088):低位反弹或可持续



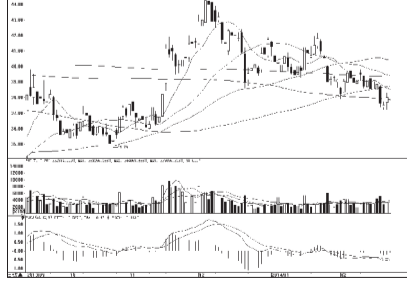
美的集团 (000333):低位反弹或可持续



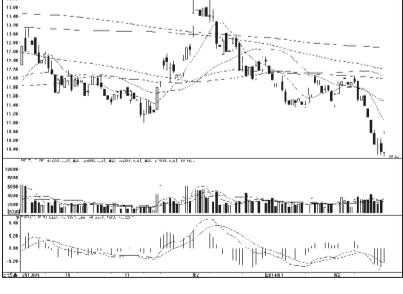
招商银行 (600036):弱势格局,观望



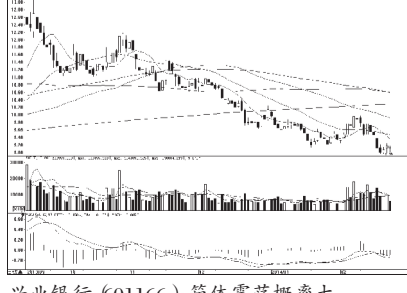
万科A (000002):等待右侧机会



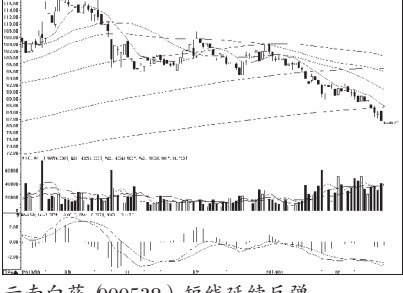
中国平安 (601318):横盘整理概率大



广发证券 (000776):短线反弹概率大



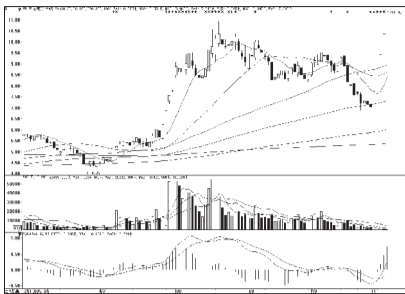
兴业银行 (601166):箱体震荡概率大



云南白药 (000538):短线延续反弹

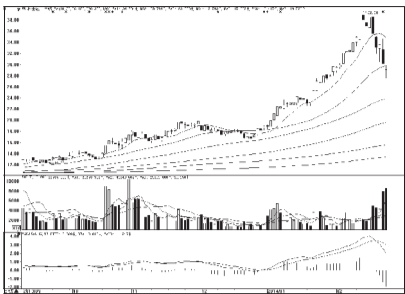
## 周涨跌幅前10

涨幅前10

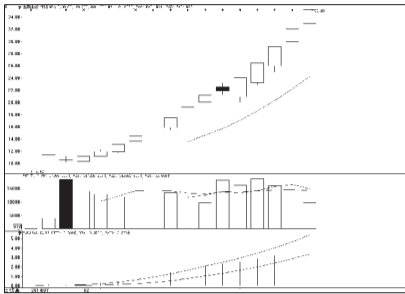


中京电子 (002579):有望持续走高

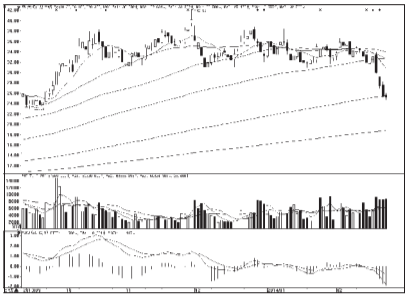
跌幅前10



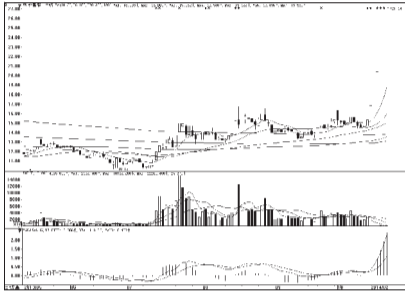
科士达 (002518):短线或有反弹



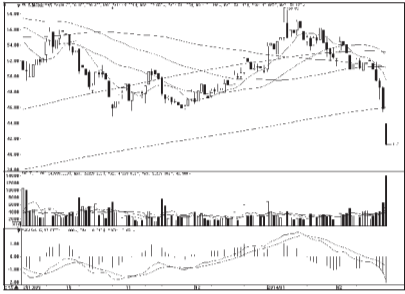
金轮股份 (002722):涨幅过大,不宜追高



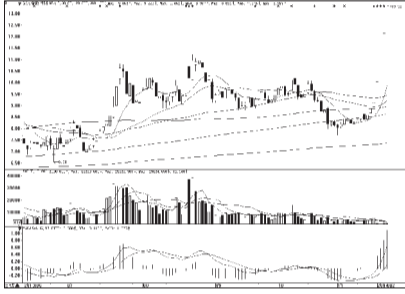
天喻信息 (00205):破位下行,观望



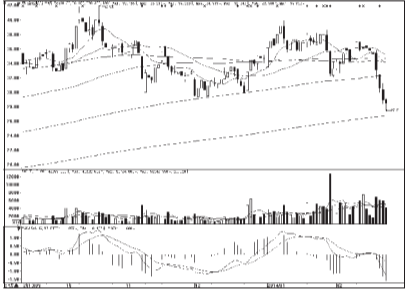
新国都 (800130):有望持续走高



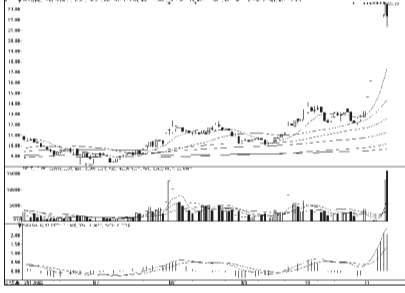
双鹭药业 (002038):短期有望超跌修复



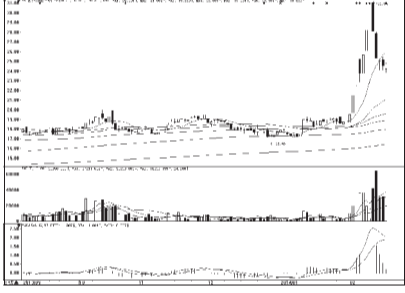
赛为智能 (800044):有望持续走高



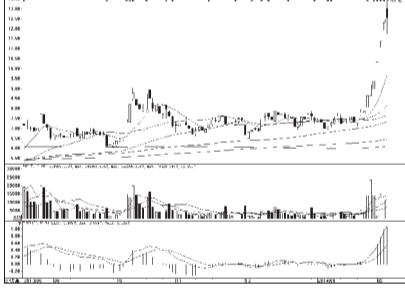
盛运股份 (800090):短期有望企稳反弹



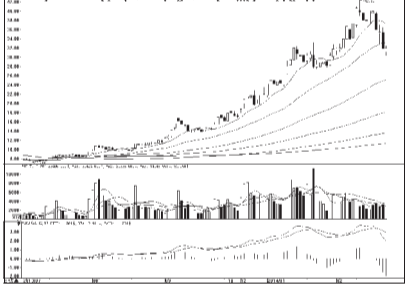
银河电子 (002519):高位回调,落袋为安



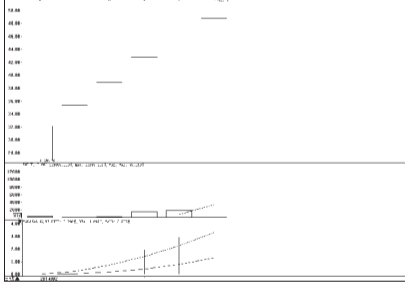
西藏药业 (600211):静待企稳,仍有上攻



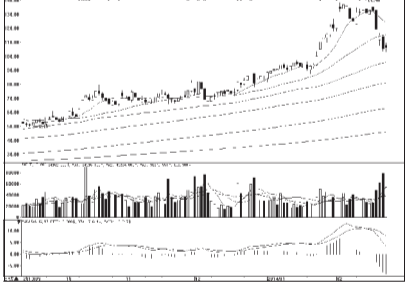
物产中拓 (000906):多空博弈,观望



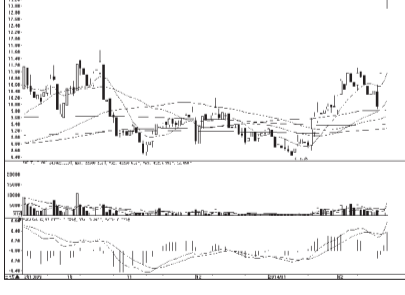
联建光电 (800269):短线或仍有反弹



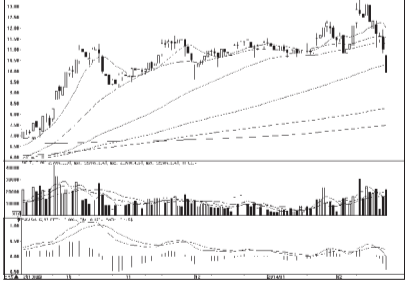
岭南园林 (002717):波动异常,观望



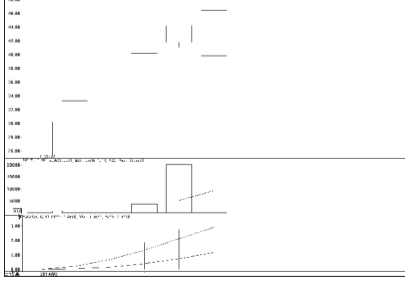
网宿科技 (800017):高位整理,观望为宜



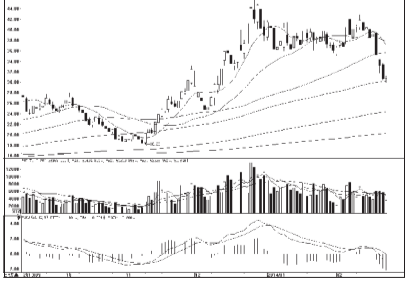
上海普天 (600680):炒作热烈,静观后市



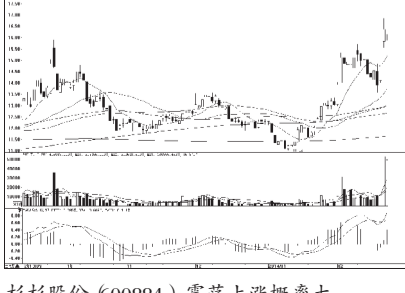
物产中大 (600704):跌势加速,回避



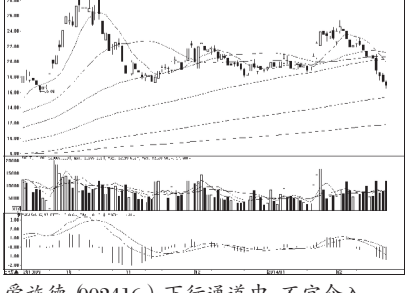
东易日盛 (002713):炒作热烈,静观后市



北京君正 (800223):短线或有反弹



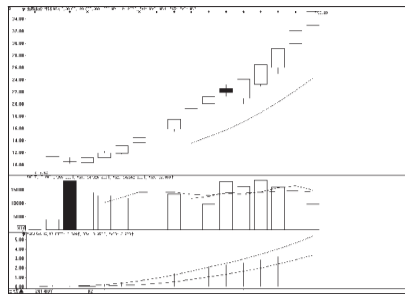
杉杉股份 (600884):震荡上涨概率大



爱施德 (002416):下行通道中,不宜介入

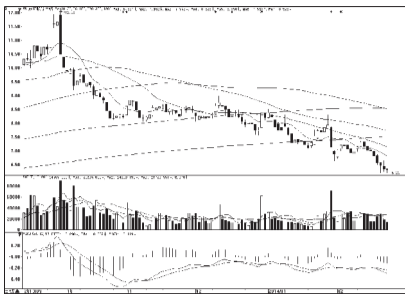
## 连续涨跌前10

连涨前10

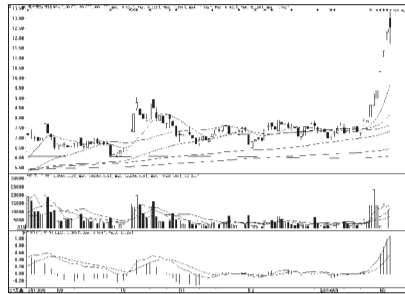


金轮股份 (002722):涨幅已大 不宜追高

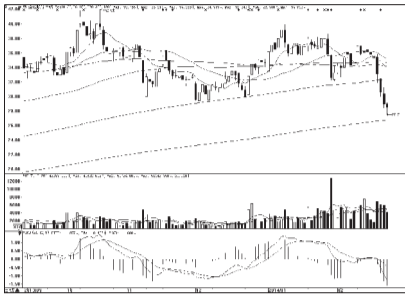
连跌前10



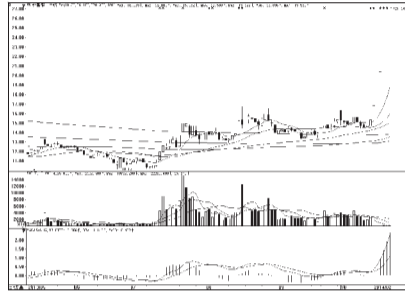
京城股份 (600860):底部筑成 反弹在即



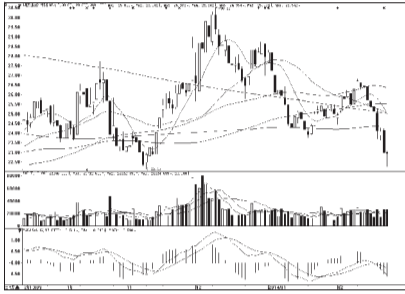
物产中拓 (000906):短线谨防回调



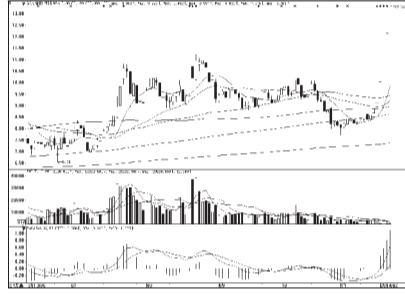
盛运股份 (800090):破位下行 观望



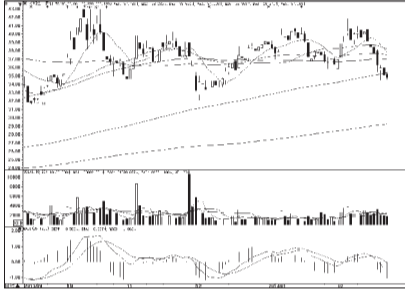
新国都 (800130):连续涨停 或有回抽



朗姿股份 (002612):短线企稳 有望上攻



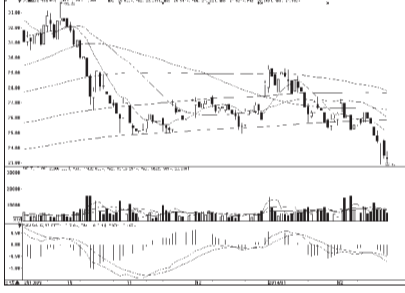
赛为智能 (800044):规避风险 落袋为安



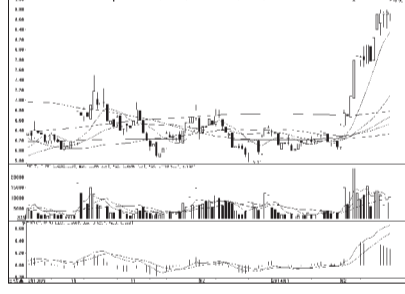
万邦达 (800055):短线震荡调整



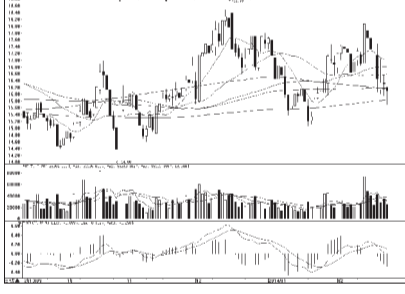
万马电缆 (002276):高位调整 或再上攻



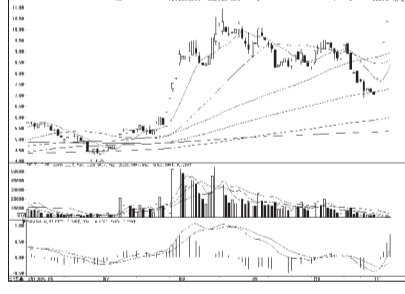
人福医药 (600079):破位下行,观望



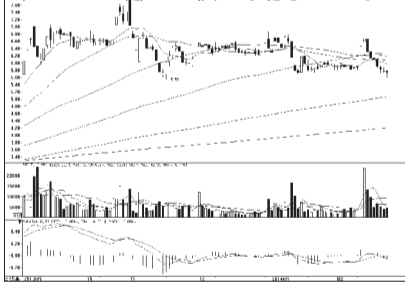
苏常柴A (000570):平顶排列 回调在即



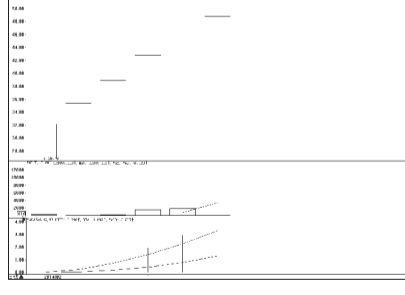
西王食品 (000639):破位下行 回避



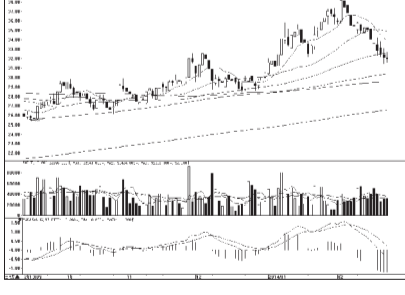
中京电子 (002579):不宜盲目追高



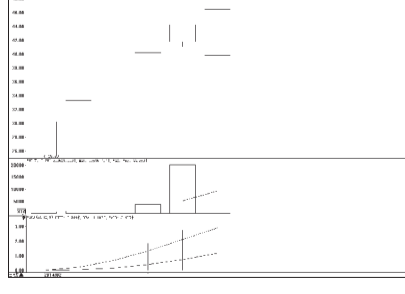
宝鹰股份 (002047):跌幅已大 反弹可期



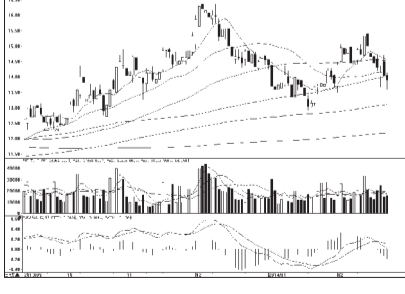
岭南园林 (002717):短线回调 落袋为安



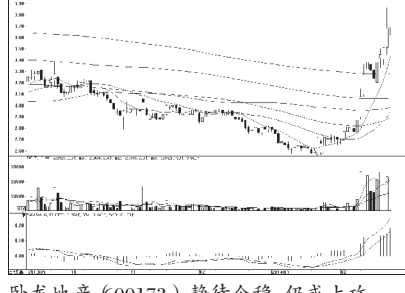
康缘药业 (600557):弱势震荡 或有反弹



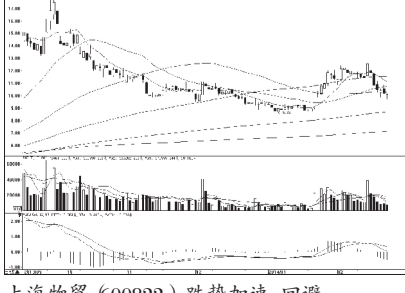
东易日盛 (002713):抛压不小 观望为佳



苏泊尔 (002032):破位下行 回避



卧龙地产 (600173):静待企稳 仍或上攻



上海物贸 (600822):跌势加速 回避