

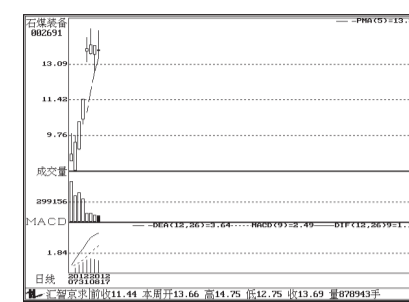
沪深10大权重股



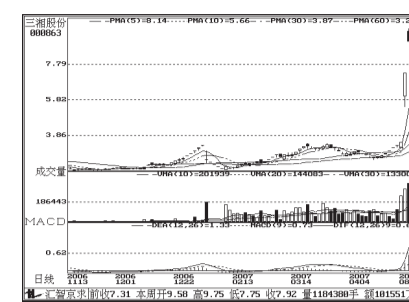
中国石油 (601857): 持续弱势



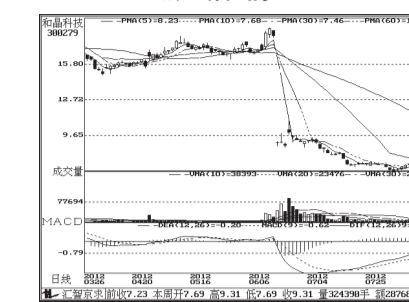
洋河股份 (002304): 放量下行, 偏空



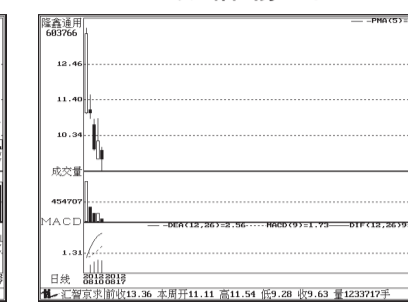
石煤装备 (002691): 高位整理



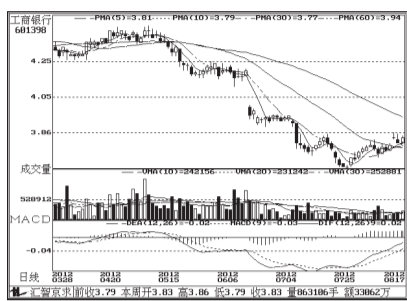
三湘股份 (000863): 谨防高位回落风险



和晶科技 (600279): 短线或继续上涨, 但风险大



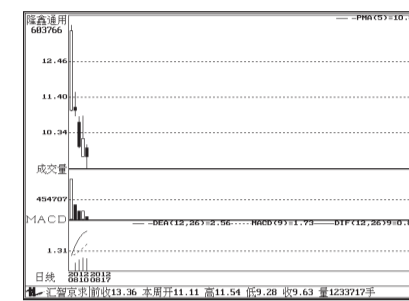
隆鑫通用 (603766): 下跌趋势中, 回避



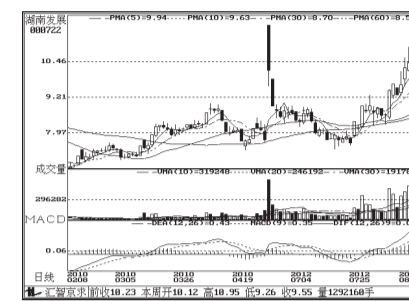
工商银行 (601398): 窄幅整理



五粮液 (000858): 调整中, 待缩量



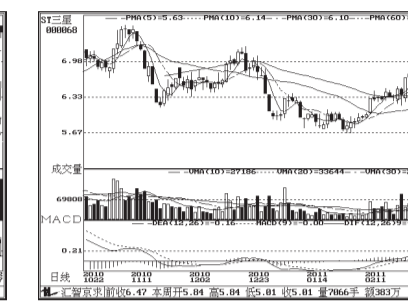
隆鑫通用 (603766): 下跌趋势中, 回避



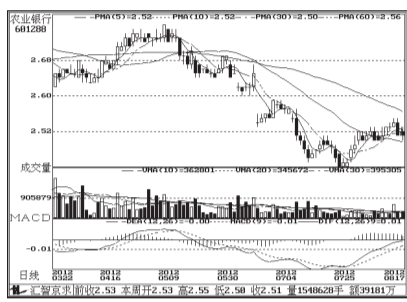
湖南发展 (000722): 趋势下行



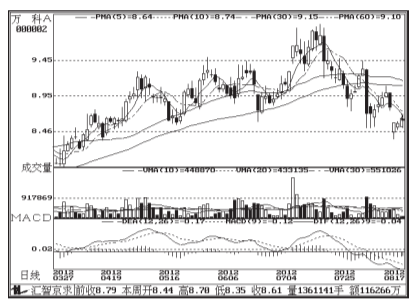
ST高陶 (600562): 绩差股, 不碰



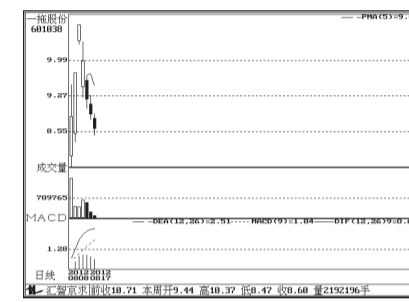
ST三星 (000068): 绩差股, 不碰



农业银行 (601288): 继续横向震荡



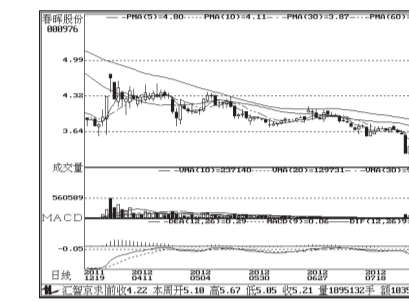
万科A (000002): 量能萎缩, 窄幅整理



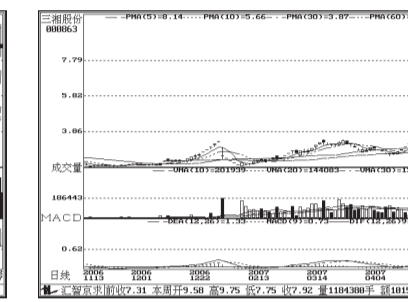
一拖股份 (601038): 估值过高, 回避



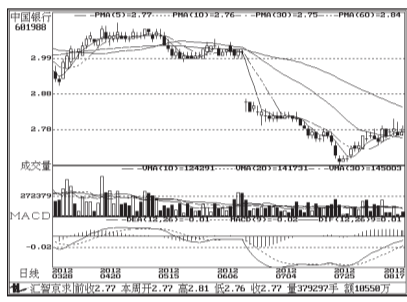
巨龙管业 (002619): 大跌不放量, 回避



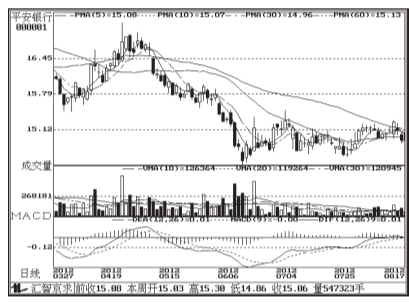
春晖股份 (000976): 可能转跌



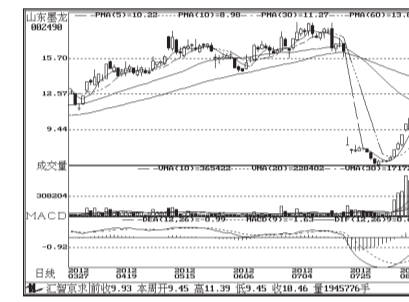
三湘股份 (000863): 谨防高位回落风险



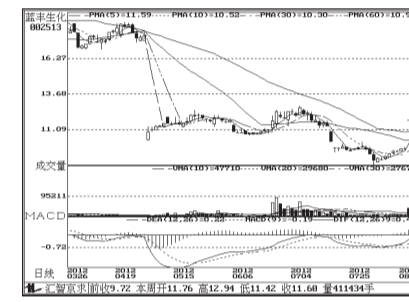
中国银行 (601988): 量能不足, 窄幅震荡



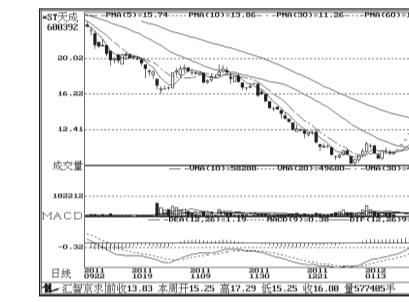
平安银行 (000001): 整理之中



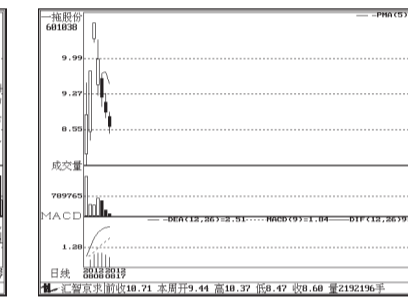
山东墨龙 (002490): 短线仍有反复, 观望



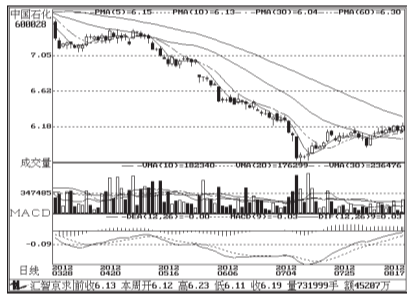
蓝丰生化 (002513): 短线或有反复, 但风险大



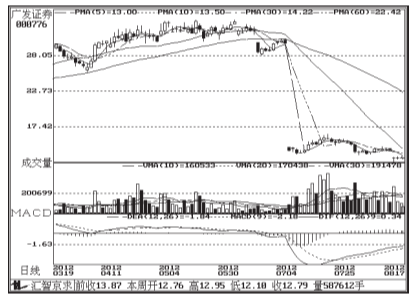
*ST天成 (600392): 量能萎缩



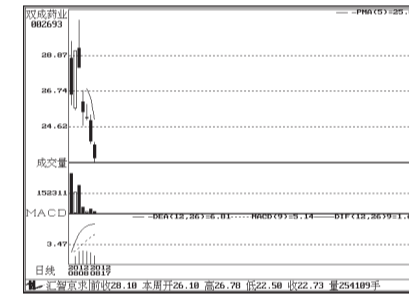
一拖股份 (601038): 估值过高, 回避



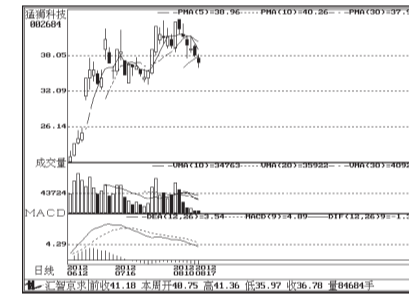
中国石化 (600028): 60日均线处有压力



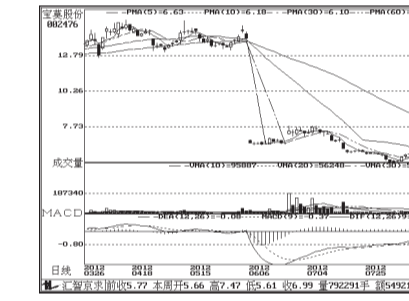
广发证券 (000776): 趋势不明, 成交萎缩



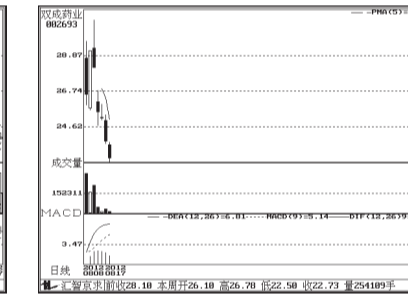
双成药业 (002693): 下跌趋势中, 回避



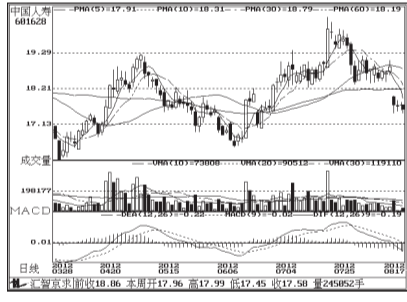
猛狮科技 (002684): 涨势趋弱, 暂回避



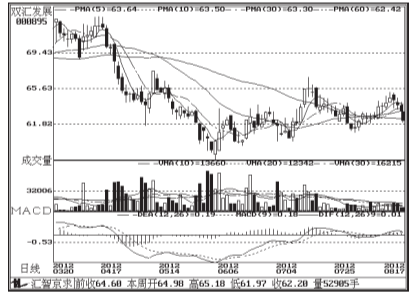
宝莫股份 (002476): 前期缺口可能回补, 回避



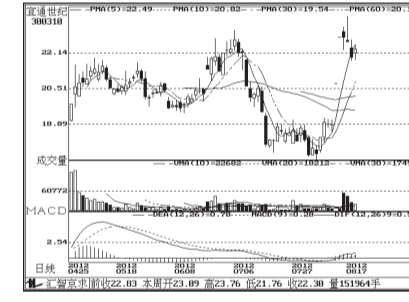
双成药业 (002693): 下跌趋势中, 回避



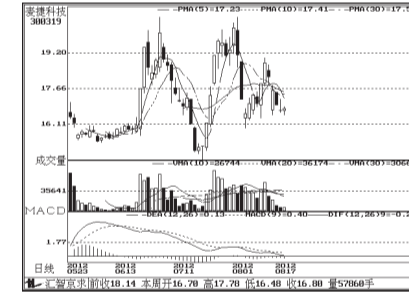
中国人寿 (601628): 暂时企稳



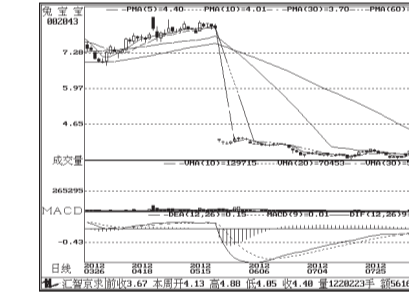
双汇发展 (000895): 转空



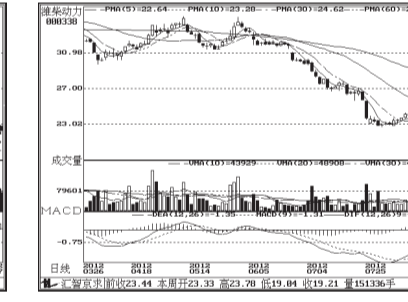
宜通世纪 (800310): 下行趋势中



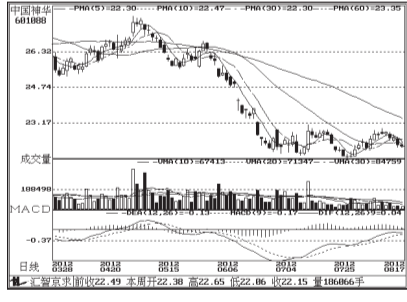
麦捷科技 (000319): 缩量窄幅整理



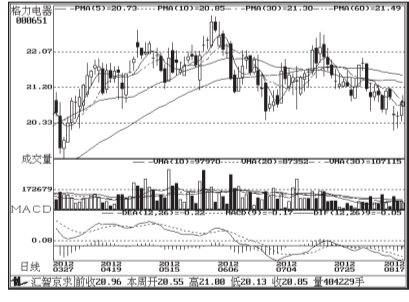
兔宝宝 (002043): 注意高位回落风险



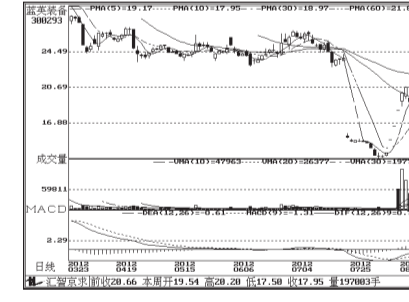
潍柴动力 (000338): 行情趋弱



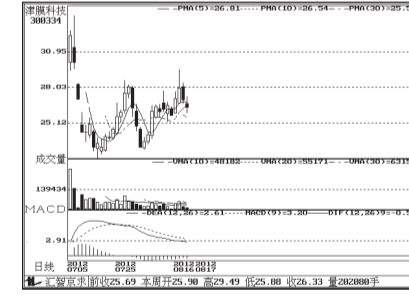
中国神华 (601088): 弱势整理



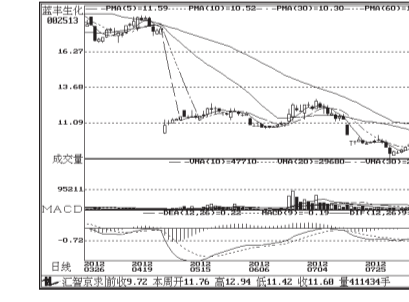
格力电器 (000651): 小幅上行



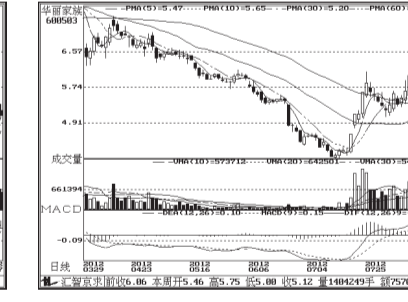
蓝英装备 (000293): 重心下移



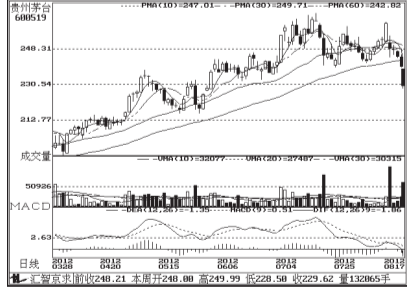
津膜科技 (000334): 看空



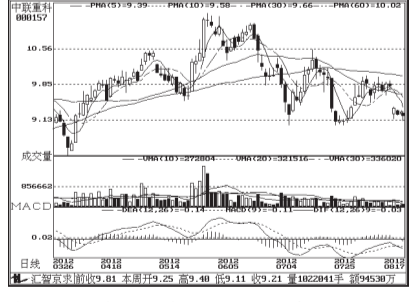
蓝丰生化 (002513): 短线或有反复, 但风险大



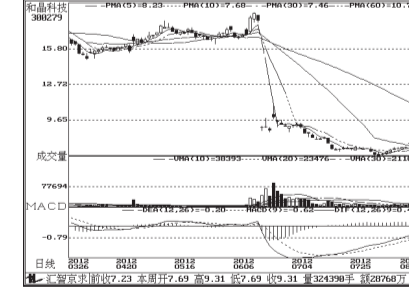
华丽家族 (600503): 量能不足, 行情偏空



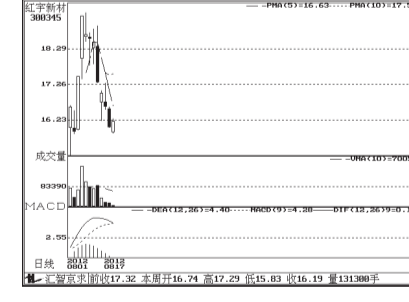
贵州茅台 (600519): 空头趋势中



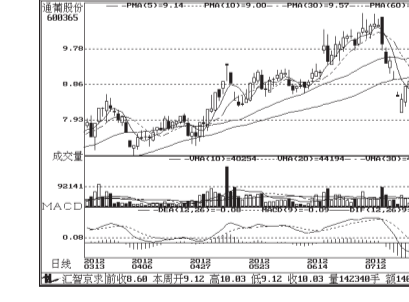
中联重科 (000157): 面临方向选择, 观望



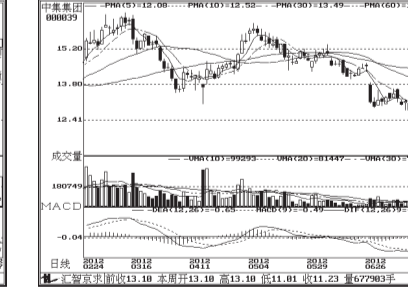
和晶科技 (600279): 短线或继续上涨, 但风险大



红宇新材 (000345): 偏空



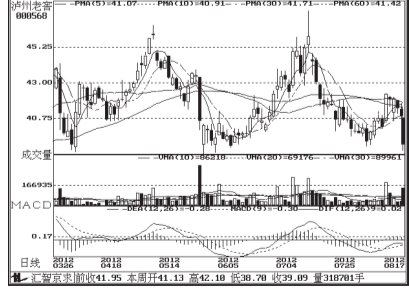
通葡股份 (600365): 放量上涨



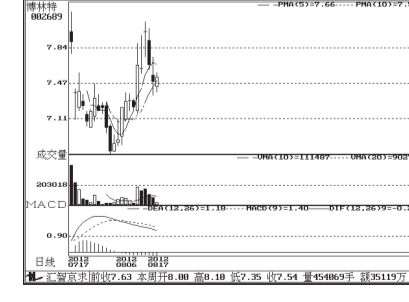
中集集团 (000039): 量能不足



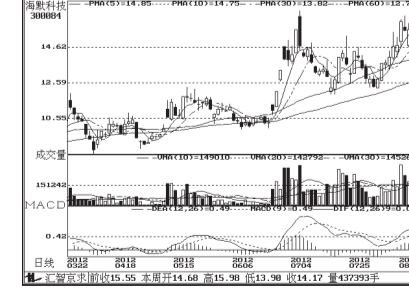
中国平安 (601318): 面临方向选择, 观望



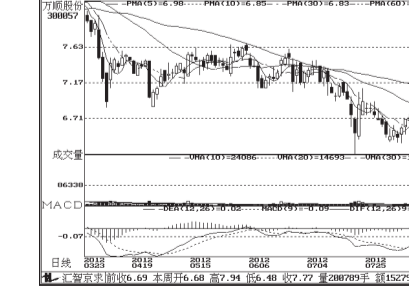
泸州老窖 (000568): 破位下跌, 成交放量



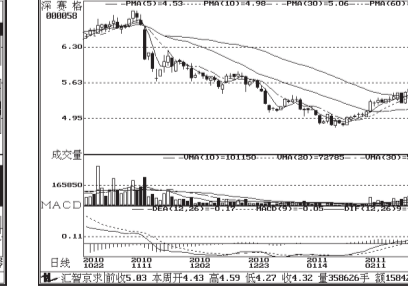
博林特 (002689): 可能企稳



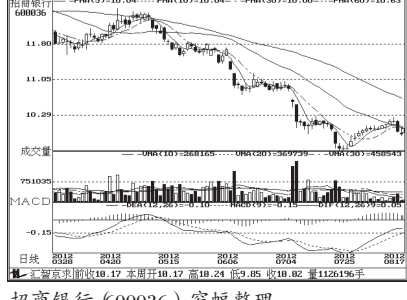
海联科技 (000084): 短线或有支撑



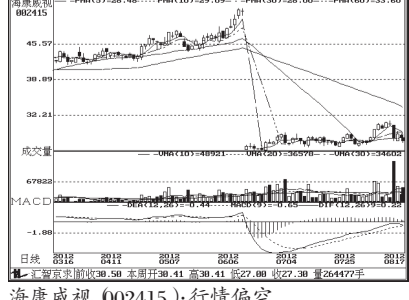
万顺股份 (000057): 单日成交量过大, 注意风险



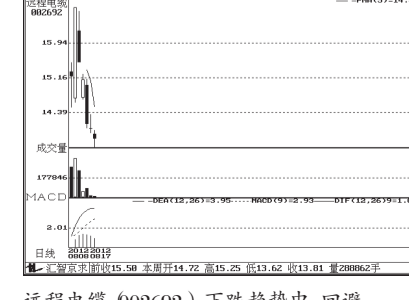
深赛格 (000058): 缩量下跌



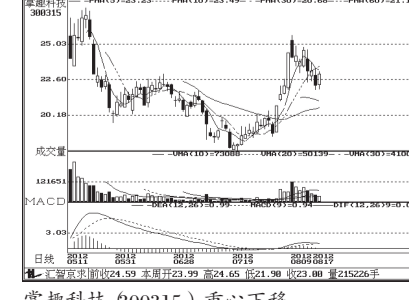
招商银行 (600036): 窄幅整理



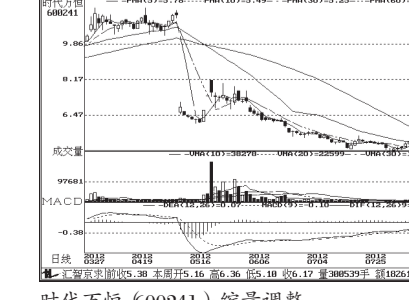
海康威视 (002415): 行情偏空



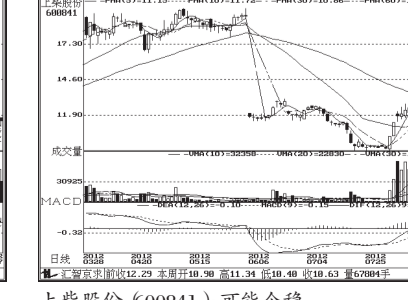
远程电缆 (002692): 下跌趋势中, 回避



掌趣科技 (000315): 重心下移



时代万恒 (600241): 缩量调整



上柴股份 (600841): 可能企稳

周换手率前20

周涨跌幅前10

涨幅前10

跌幅前10